

Impact Beds and Bars

Douglas Impact Beds are engineered to protect the conveyor belt at key transfer point areas. They help to keep material on the belt where it belongs. Impact beds help to absorb shock loads and support the full width of the conveyor belt. They help to eliminate the cost of idler maintenance and failure. No more bent idler shafts and frames, or worn out rollers to replace.

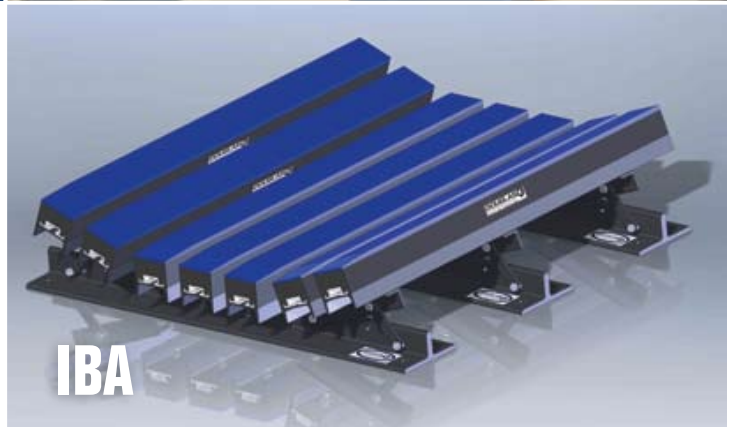


IBA - Titan™ Adjustable Impact Bed Assembly

- Adjustable wing height easily changes from flat, 20° or 35° as needed
- Support arms adjustable from flat to 20° and 35°
- Easy installation, fold one side flat and slide under the belt
- Optional center impact rolls available (must be requested)
- 48" and 60" long beds and bars available

ISE - Titan™ Sectional Impact Bed Assembly

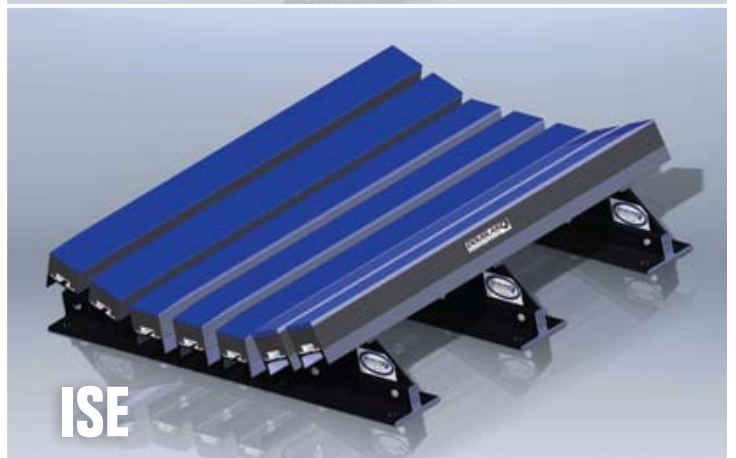
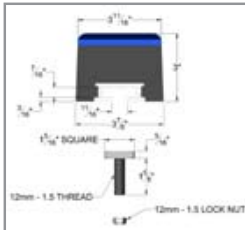
- Reduce down-time with 3 easily removable sections while the conveyor belt is in place
- Fixed angles of 20°, 35° or 45° (specify at time of order)
- Removable sections allow simple bar replacement
- Sections allow for ease of installation in tight or out of the way applications
- Optional center impact rolls available (must be requested)
- 48" and 60" long beds and bars available



IBA

IBB - Impact Bed Bars & ITB - T-Bolts

- Replacement Impact Bars mount using field proven T-Bolt locking system
- Profiled leading edge helps increase service life of bars
- Anodized aluminum insert helps to prevent corrosion and ensure simple bar replacement
- Easily retrofits to many other manufacturer's impact bed assemblies
- 48" and 60" long beds and bars available



ISE



IBB



Scan here for more information on Impact Beds.



INDUSTRIES SERVED INCLUDE:



Also Available from Douglas:

PULLEYS

LAGGING

IDLERS

TAKE-UPS

MAGNETIC SEPARATORS

Contact us 205-884-1200

sales@douglasmanufacturing.com

Or visit our website at

www.douglasmanufacturing.com



Conveyor Equipment
Manufacturer's Association

DOUGLAS D[®]
CONVEYING INNOVATION

300 Industrial Park Drive, Pell City, AL 35125 (U.S.A)

Copyright © 2011 Douglas Manufacturing Co., Inc. All Rights Reserved.

Visit Us at: www.IPCD-Inc.com